



## Reagents for Hospital Laboratories

**PanReac AppliChem** has a full range of products for histology, haematology and microbiology, which includes the most commonly used reagents in the process of preparing samples for examination under the microscope. With this range, all the stages of fixing, clearing, paraffin inclusion, staining and mounting are covered.

**We include here a list of the main reagents used in Hospital Laboratories:**

- **Clinical Pathology:** Hematology, Histopathology, Cytology, Routine Pathology.
- **Clinical Microbiology:** Bacteriology, Mycobacteriology, Virology, Mycology, Parasitology, Immunology, Serology.



### DRYING AND CLEARING

**Drying** is the complete removal of water from the specimen or tissue sample so that it can be properly embedded in the inclusion media. This process is carried out by immersing tissue in a series of ethanol solutions of increasing concentrations until absolute alcohol. **Clearing** process is the replacement of the dehydrating agent with a substance miscible with the embedding medium to be used.



**Superior dehydrating and clearing processes for a perfect sample preparation**

Product number	Product name	CAS number	Pack sizes
251086	Ethanol absolute (CE-IVD) for clinical diagnostics*	64-17-5	1 L, 5 L, 10 L
141086	Ethanol absolute pure*	64-17-5	1 L, 2.5 L, 5 L, 25 L
147194	Ethanol 99.8 % denatured with IPA, MEK and Bitrex pure*	64-17-5	2.5 L, 5 L, 10 L, 25 L
255069	Isoparaffin H (Substitute of Xylene)(CE-IVD) for clinical diagnostics	90622-58-5	5 L
251769	Xylene, mixture of isomers (CE-IVD) for clinical diagnostics	1330-20-7	1 L, 5 L

\* Check availability in your country

**FIXING**    

Fixation interrupts the degradation processes after cell death, trying to preserve the architecture and composition of tissues and cells as closely as possible to how they were in the living organism.

**Easy handling of formaldehyde for safer work. High-quality IVD reagent**



Product number	Product name	CAS number	Pack sizes
252931	Formaldehyde 3.7-4.0% w/v buffered to pH=7 and stabilized with methanol (CE-IVD) for clinical diagnostics	50-00-0	1 L, 5 L, 10 L, 25 L
256462	Histofix® Preservative ready to use (CE-IVD) for clinical diagnostics	50-00-0	45x10 mL 44x20 mL 45x30 mL 45x40 mL 24x75 mL 16x125 mL 12x200 mL 10x600 mL 4x1.5 L 4x3 L
257462	Histofix® Preservative ready to use (pink) (CE-IVD) for clinical diagnostics	50-00-0	45x10 mL 45x30 mL 45x40 mL
258462	Histofix®-Safe Preservative ready to use (CE-IVD) for clinical diagnostics <b>NEW!</b>	50-00-0	50x20 mL 50x40 mL 50x30 mL 11x20 mL (test kit)



**Histofix®-Safe** sets new standards in the safe handling of biopsy samples with formalin. Thanks to its ergonomic and innovative design, it offers:

- No contact with formalin for medical personnel
- Sample collection and fixation in one single, safe step
- No fumes, no leaks, no confusion with saline solution
- Compatible with endoscopy departments and pathology labs
- CE IVD marked – fully manufactured in Europe

**Histofix®-Safe: The new generation for safe biopsies – more protection, better handling, and full reliability**

**Watch how it works in our video**



## INCLUSION



Embedding consists in replacing the water of the tissue by a liquid medium capable of solidifying under the appropriate temperature conditions, in order to provide the sample with adequate consistency and homogeneity to obtain very thin translucent sections by means of an instrument called a microtome.

Product number	Product name	CAS number	Pack sizes
256993	Paraffin M.P. 55-58°C plasticized + DMSO pellets(CE-IVD) for clinical diagnostics	8002-74-2	6 x 1 kg 10 kg
256876	Paraffin Cleaner (CE-IVD) for clinical diagnostics		6 x 100 mL

**Keep your microtome clean in the best conditions**



**Your preparations in the best paraffin**



## MOUNTING



Immersion media are liquids, mainly natural oils, with a defined refractive index. For uniform oil immersion, the refractive index (nD) should be around 1.5—matching glass—to ensure consistent light refraction at the slide, specimen, and cover glass interfaces, enhancing resolution and image quality under the microscope.

Product number	Product name	CAS number	Pack sizes
251002	Immersion Oil (CE-IVD) for clinical diagnostics	8001-79-4	100 mL

**A homogeneous immersion oil for a perfect view**

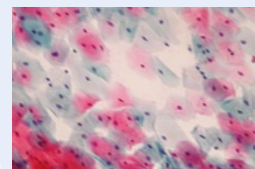
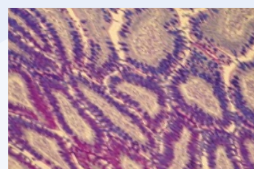
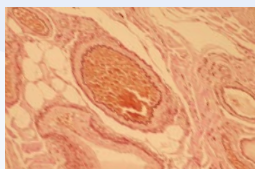


## STAINING



Microscopy dyes are used mainly in histology, cytology and microbiology but also in other analytical techniques.

**Stains specifically made for biological samples**



Product number	Product name	Application	Pack sizes
256879	Eosin Yellowish alcoholic solution 1% (CE-IVD) for clinical diagnostics	Solution for Hematoxylin-Eosin staining, in human and gynecological samples	500 mL, 2.5 L
251338	Giemsa's Azur-Eosin-Methylene Blue solution (slow) (CE-IVD) for clinical diagnostics	Differential blood staining; demonstration of blood parasites and protozoa	500 mL, 1 L

>>



## << Staining

Product number	Product name	Application	Pack sizes
256649	Gram-Hucker's Staining Kit (Droppers) (CE-IVD) for clinical diagnostics	Microbiology: for differentiation of gram positive and gram negative bacteria	Kit
253949	Harris Hematoxylin solution (CE-IVD) for clinical diagnostics	Citology-Histology: solution for Hematoxylin-Eosin staining, in human and gynaecological samples	500 mL, 1 L, 2.5 L
254807	Kit for Fast Staining in Haematology (Fast Panoptic) (CE-IVD) for clinical diagnostics	Haematology: characterization of leukocytes	Pack 3 x 500 mL
254766	Mayer's Hematoxylin solution (CE-IVD) for clinical diagnostics	Nuclear staining for cytology	1 L
253594	Papanicolaou's Solution EA 50 (CE-IVD) for clinical diagnostics	Cytology: cytoplasm staining	1 L, 2.5 L
253892	Papanicolaou's Solution OG 6 (CE-IVD) for clinical diagnostics	Cytology: cytoplasm staining of mature and keratinized cells	1 L, 2.5 L



Giemsa's Azur-Eosin-Methylene Blue solution (slow) (CE-IVD) for clinical diagnostics



Gram-Hucker's Staining Kit (Droppers) (CE-IVD) for clinical diagnostics



Kit for Fast Staining in Haematology (Fast Panoptic) (CE-IVD) for clinical diagnostics

## SPECIAL APPLICATION

24-hour urine analysis is common for the detection and diagnosis of tumors, as well as for the formation of kidney stones. Because of this long sampling period, the urine must be stabilized. PanReac AppliChem offers vials with 10 mL of concentrated hydrochloric acid for this application.



Product number	Product name	CAS number	Pack sizes
187051	Hydrochloric Acid 10 mol/L (10N) volumetric solution	7647-01-0	100 x 10 mL

**Convenience and quick: vial ready for use with the adequate concentration**

IP-049EN

